

How it works...



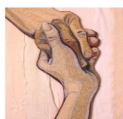
Family accompanies loved one for psychiatric evaluation.

OR

Family needs extra support following psychiatric admission.



Call Project
F.ER.S.T.
973-342-9468



Mental health professional arrives for family education and support.

On-Site Support

9am - 10pm
Monday to Friday

Telephone support available off hours.

For more information about **Project F.ER.S.T.**, the Intensive Family Support Services (IFSS), or any other program of the Mental Health Association of Essex County, Inc. please contact us:

(973) 509-9777

Allison Herman, MA
Project F.ER.S.T. Liaison

Melvorn Bryan
Project F.ER.S.T. Liaison

Marvin Gorsky, LCSW
Senior Director of Children,
Counseling & Family Services

The Intensive Family Support Services (IFSS), a program of the Mental Health Association of Essex County, Inc., provides support for individuals who have an adult family member with mental illness. We recognize that caring for someone who has a mental illness may be physically and emotionally stressful. We aim to provide family members with the resources needed to cope.

Project
F.ER.S.T.

Family Emergency Room
Support Team

973-342-9468



A Service of

Intensive Family Support Services

Mental Health Association
of Essex County

33 South Fullerton Avenue
Montclair, New Jersey 07042
Phone (973) 509-9777
Fax (973) 509-9888

Project F.ER.S.T. Mission

The mission of **Project F.ER.S.T.**, a service of Intensive Family Support Services (IFSS), is to ease the anxiety and stress that families feel when they accompany a loved one to the hospital for a mental health evaluation.



Families & Hospitals



Meeting Mutual Goals...

Ultimately, the family comes away with reduced anxiety and more positive feelings about the hospital experience. In turn, the hospital staff can focus their resources on providing quality services to the identified mental health consumer.

Project F.ER.S.T. Services

We provide on-site professional support to families with a loved one in need of hospital-based mental health services. **Project F.ER.S.T.** has a broad definition of family and loved ones, understanding that any family or friend present is concerned and may benefit from support, guidance and information.

Interventions may include:

- Explanation of hospital procedures, including medical clearance and the legalities of involuntary commitment.
- Listening to and addressing family fears and concerns.
- Supportive counseling during and after the emergency room evaluation.
- Education on mental health through discussion, reading material and the use of portable audio-visual equipment.

Family members who have utilized **Project F.ER.S.T.**

Intensive Family Support Service Referral

services will receive a follow-up call to assess further concerns and questions. When necessary, family members will be referred to Intensive Family Support Services (IFSS) and/or local hospital or community groups to receive continuing support.

Satisfaction Survey



The Mental Health Association of Essex County strives to supply the community with the best possible support for individuals with mental illness and their loved ones. Friends and families served by **Project F.ER.S.T.** will receive a confidential satisfaction survey to assess how we impacted their hospital experience and how to improve our performance in the future.

